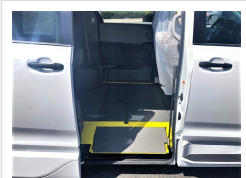
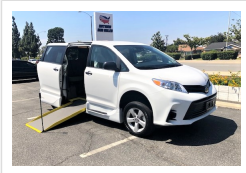


## 2019 VMI Paratransit Van

Unit# 17415



<b>Chassis:</b>	Toyota Sienna
<b>Engine/Fuel:</b>	3.5L V6 Gas
<b>Transmission:</b>	Automatic
<b>Odometer:</b>	13
<b>Configuration:</b>	4 Passengers, Forward Facing, plus driver, Rear Luggage, 2 Tiedowns,
<b>Location:</b>	California
<b>Price:</b>	\$58,900.00

### Options/Specification:

Conversion by Revability a VMI Company  
 More room to turn due to 12"-longer floor  
 Easy entry for wide power chairs on 30" ramp  
 Maximum door height for tall wheelchair users  
 Industry-best headroom via 14.9" dropped floor  
 High ground clearance to reduce scraping  
 Manual In-Floor Ramp  
 Access 360 Interior  
 Removable Front Passenger Seat  
 Access up to 2 Wheel Chair Positions  
 Daytime Running Lights  
 Blind Spot Mirrors  
 Power Liftgate  
 17-inch Alloy Wheels  
 3-Zone Climate Control  
 Backup Camera  
 Entune Audio  
 Bluetooth Hands-Free  
 3.5-inch LCD Display  
 Remote Keyless Entry